

# T8

## 16.9T8/MAS/48-835/MF25/P 10/1

Our TLEDs are available in InstantFit (Type A / Type C) or MainsFit (Ballast bypass / Type B) versions. The InstantFit lamps work on a broad variety of ballasts and LED drivers. Only InstantFit has over 15,000 lamp & ballast combinations delivering even light output, energy savings and a long lifetime. Our MainsFit products feature a double-ended design, simplifying installation while a proprietary safety circuit minimizes a shock risk. Lamp sizes range from 2-foot to 8-foot and U-bend with a variety of lumen outputs.

### Product data

General information	
Base	G13 [ Medium Bi-Pin Fluorescent]
EU RoHS compliant	Yes
Nominal Lifetime (Nom)	70000 h
Switching Cycle	50000
Tier	MasterClass
Light technical	
Color Code	835 [ CCT of 3500K]
Beam Angle (Nom)	180 °
Initial lumen (Nom)	2400 lm
Color Designation	White (WH)
Correlated Color Temperature (Nom)	3500 K
Luminous Efficacy (rated) (Nom)	142.00 lm/W
Color Consistency	<6
Color Rendering Index (Nom)	80
LLMF At End Of Nominal Lifetime (Nom)	70 %
Operating and electrical	
Input Frequency	50 to 60 Hz

Power (Rated) (Nom)	16.9 W
Lamp Current (Max)	150 mA
Lamp Current (Min)	65 mA
Wattage Equivalent	32 W
Starting Time (Nom)	0.5 s
Warm Up Time to 60% Light (Nom)	0.5 s
UL Type	Type B - bypass the ballast
Power Factor (Nom)	0.9
Voltage (Nom)	120-277 V
Temperature	
T-Ambient (Max)	113 °F
T-Ambient (Min)	-4 °F
T-Storage (Max)	149 °F
T-Storage (Min)	-40 °F
T-Case Maximum (Nom)	158 °F
Controls and dimming	
Dimmable	Limited

# T8

## Mechanical and housing

Bulb Finish	Frosted
Bulb Material	Plastic
Product Length	47-1/4 in
Bulb Shape	Tube, double-ended

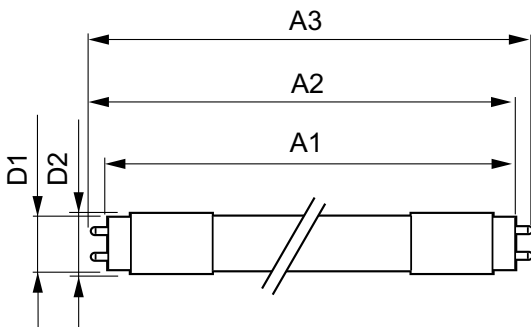
## Approval and application

Energy Saving Product	Yes
Approbation Marks	RoHS compliance UL certificate DLC compliance

## Product data

Order product name	16.9T8/MAS/48-835/MF25/P 10/1
EAN/UPC - Product	046677575564
Order code	575563
Numerator - Quantity Per Pack	1
Numerator - Packs per outer box	10
Material Nr. (12NC)	929002442434
Net Weight (Piece)	0.265 lb
Model Number	9290024424

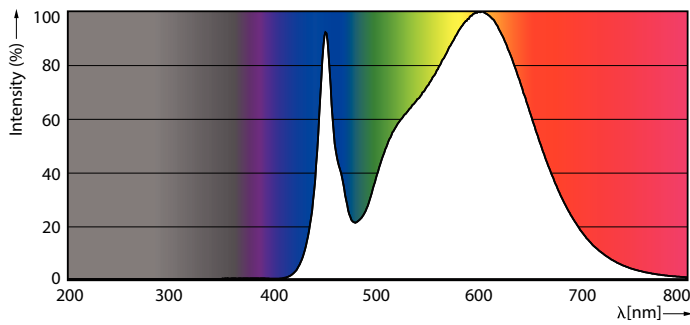
## Dimensional drawing



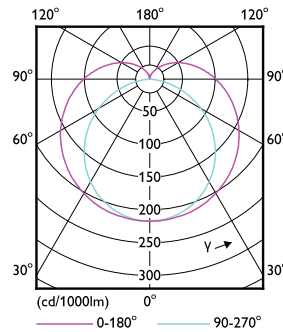
16.9T8/MAS/48-835/MF25/P 10/1

Product	D1	D2	A1	A2	A3
16.9T8/MAS/48-835/MF25/P 10/1	1-1/16 in	1-1/8 in	47-3/16 in	47-1/2 in	47-3/4 in

## Photometric data

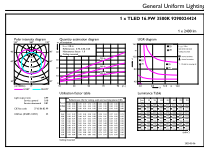


LEDtube 16,9W G13 2400lm 835



LEDtube 16,9W G13

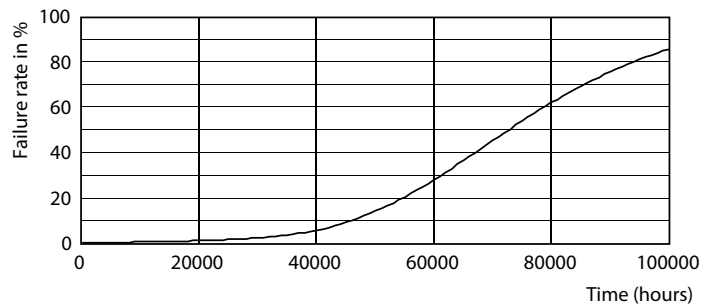
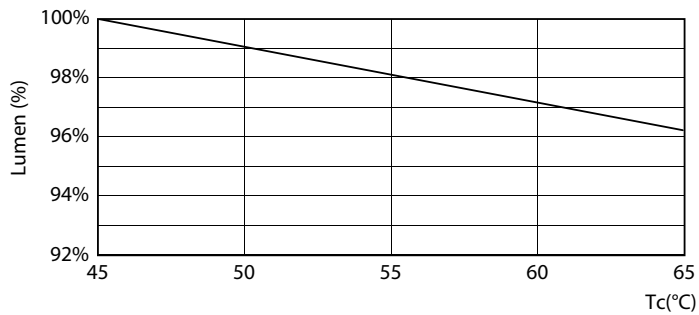
Photometric data



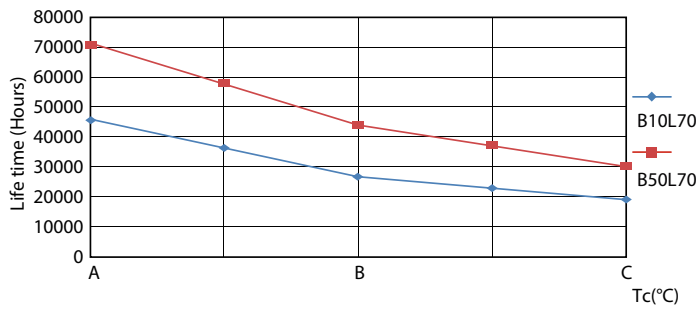
LED Tube Parameters 43 Page 10

LEDtube 16,9W G13 2400lm 835

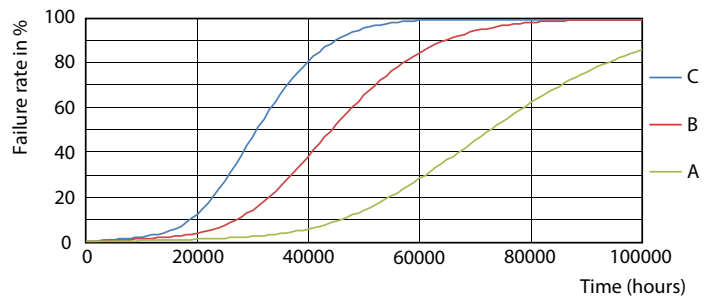
Lifetime



LEDtube 16,9W 70K LumenVsTc



Life Expectancy Diagram

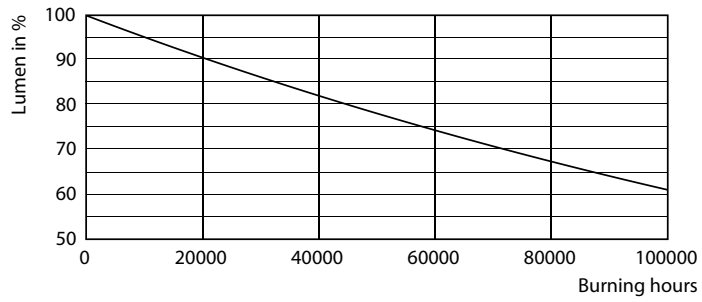


LEDtube\_70K\_LifetimeVsTc-LED

LEDtube\_70K\_FailureRate-LED

# T8

## Lifetime



Lumen Maintenance Diagram

